

BATTLECRUISER 3000AD™

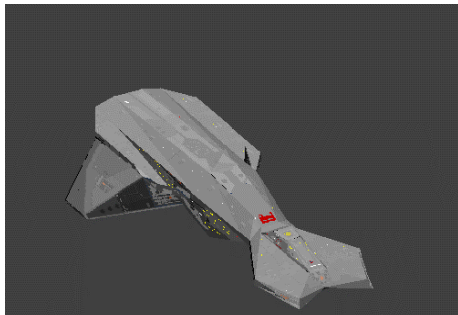
APPENDIX D CRAFT SPECIFICATIONS

The following is a list of the principle spacecraft found in the Galaxy. All ranges and lengths are in meters, and all times in milliseconds. The laser blast energy figure given is per shot fired by each Ion Disruptor or laser denoted as the crafts main gun. Note that all carriers and cruisers also carry a full complement of shuttles and ATVs.

For notes on weaponry, see Appendix C (Weapon Specifications).

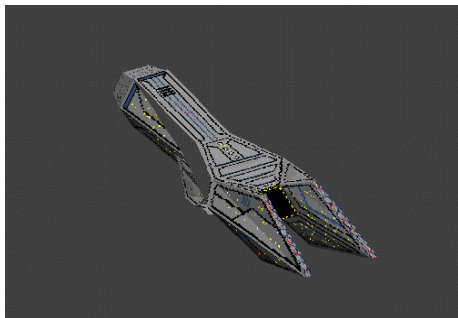
1. ATTACK CARRIERS

STORMCARRIER



SHIELDS	2500	- WEAPONRY -
ARMOR	5000	MAIN GUNS 2 x MAX IOD
LASER RANGE	15000	TURRETS 2 x T1 TORPEDO
LASER RECHARGE TIME	1000	3 x IOD
LASER BLAST ENERGY	10	MISSILES 10 x VAGRANT
MAX RADAR RANGE	250000	10 x PERSEUS
PITCH/ROLL/YAW	2/4/2	10 x QUESTOR
LENGTH	4000	10 x RALIX
CRAFT	4 x S FIGHTER	MINES 10 x CRAB
	4 x P21 VANDAL	10 x LEECH
	2 x CORSAIR	
	2 x INTERDICTOR	

AESTROM



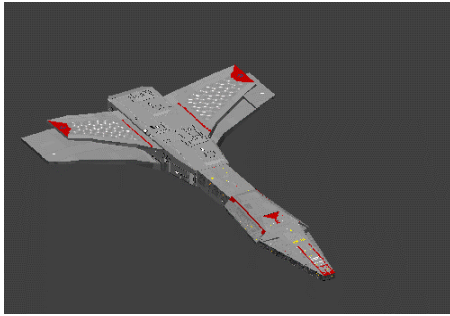
SHIELDS	1500	- WEAPONRY -
ARMOR	3500	MAIN GUNS 2 x MAX IOD
LASER RANGE	15000	TURRETS 2 x T2 TORPEDO
LASER RECHARGE TIME	750	2 x IOD
LASER BLAST ENERGY	10	MISSILES 10 x VAGRANT
MAX RADAR RANGE	250000	10 x QUESTOR
PITCH/ROLL/YAW	2/3/5	10 x STARCHILD
LENGTH	1900	MINES 5 x CRAB
CRAFT	2 x L FIGHTER	5 x LEECH
	2 x INFILTRATOR	
	2 x MANTIS	

FIRESTORM



SHIELDS	2250	- WEAPONRY -
ARMOR	2250	MAIN GUNS 2 x MAX IOD
LASER RANGE	15000	TURRETS 3 x T1 TORPEDO
LASER RECHARGE TIME	750	3 x IOD
LASER BLAST ENERGY	10	MISSILES 15 x PERSEUS
MAX RADAR RANGE	250000	15 x FIRESTAR
PITCH/ROLL/YAW	2/3/4	MINES 5 x CRAB
LENGTH	2700	5 x LEECH
CRAFT	4 x TEMPLON	
	4 x ALINIX	
	2 x S24 RAVEN	

BATTLECRUISER (CONSTELLATION CLASS)



SHIELDS 1500
 ARMOR 1000
 LASER RANGE 15000
 LASER RECHARGE TIME 500
 LASER BLAST ENERGY 25
 MAX RADAR RANGE 250000
 PITCH/ROLL/YAW 5/5/5
 LENGTH 1680
 CRAFT 4 X INTERCEPTOR
 (RENEGADE CLASS)

- WEAPONRY -
 MAIN GUN 1 X IOD
 TURRETS 3 X T3 LASER
 MISSILES 15 X STARFLASH
 15 X VAGRANT
 MINES 5 X CRAB
 5 X LEECH

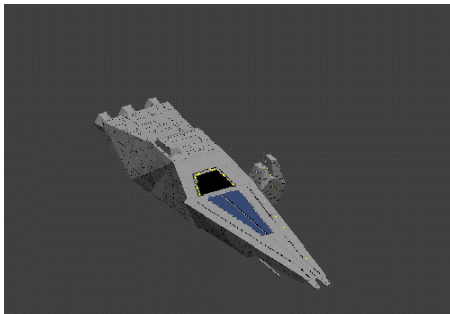
BATTLECRUISER (GALACTAN CLASS)



SHIELDS 1500
 ARMOR 1000
 LASER RANGE 15000
 LASER RECHARGE TIME 350
 LASER BLAST ENERGY 10
 MAX RADAR RANGE 250000
 PITCH/ROLL/YAW 3/3/5
 LENGTH 1800
 CRAFT 4 X INTERCEPTOR
 (SOLARIAN CLASS)

- WEAPONRY -
 MAIN GUNS 2 X MAX IOD
 TURRETS 3 X T0 LASER
 MISSILES 15 X STARFLASH
 15 X VAGRANT
 MINES 5 X CRAB
 5 X LEECH

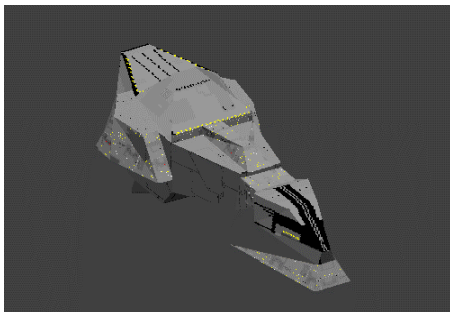
NIGHTSTAR



SHIELDS 1500
 ARMOR 1000
 LASER RANGE 15000
 LASER RECHARGE TIME 750
 LASER BLAST ENERGY 25
 MAX RADAR RANGE 250000
 PITCH/ROLL/YAW 2/3/5
 LENGTH 2000
 CRAFT 5 X STARDRONE
 5 X LIGHTSTAR

- WEAPONRY -
 MAIN GUNS 2 X IOD
 TURRETS 3 X T1 TORPEDO
 MISSILES 10 X STARFLASH
 10 X STARSEEKER
 10 X RALIX
 MINES 20 X LEECH

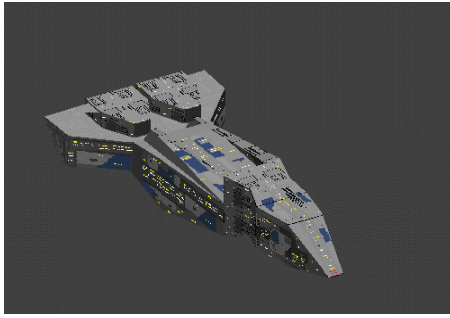
MEGARON



SHIELDS 1250
 ARMOR 1250
 LASER RANGE 15000
 LASER RECHARGE TIME 750
 LASER BLAST ENERGY 10
 MAX RADAR RANGE 250000
 PITCH/ROLL/YAW 2/5/5
 LENGTH 2500
 CRAFT 4 X DEFENDER
 4 X STARFIGHTER
 2 X ZODIAC

- WEAPONRY -
 MAIN GUN 1 X MAX IOD
 TURRETS 2 X T2 TORPEDO
 3 X IOD
 MISSILES 10 X STARFLASH
 10 X FIRESTAR
 10 X RALIX
 MINES 5 X CRAB
 5 X LEECH

VIOLON

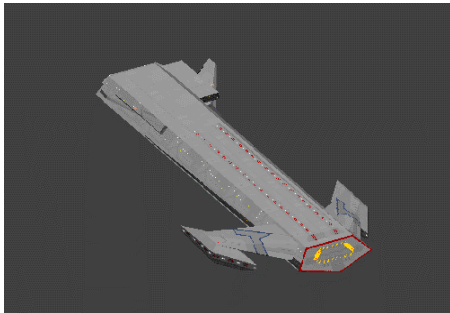


SHIELDS	1500
ARMOR	1500
LASER RANGE	15000
LASER RECHARGE TIME	750
LASER BLAST ENERGY	10
MAX RADAR RANGE	250000
PITCH/ROLL/YAW	2/3/5
LENGTH	1800
CRAFT	4 x ZENSTAR 4 x VIPER

- WEAPONRY -	
MAIN GUN	1 x MAX IOD
TURRETS	2 x T1 TORPEDO 3 x IOD
MISSILES	15 x VAGRANT 15 x RALIX
MINES	5 x CRAB 5 x LEECH

2. SUPER CRUISERS

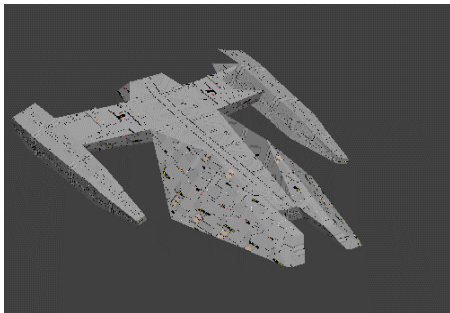
WARMONGER



SHIELDS	500
ARMOR	500
LASER RANGE	15000
LASER RECHARGE TIME	450
LASER BLAST ENERGY	25
MAX RADAR RANGE	250000
PITCH/ROLL/YAW	4/4/5
LENGTH	800

- WEAPONRY -	
MAIN GUNS	2 x T4 LASER
TURRETS	4 x T2 TORPEDO
MISSILES	10 x STARFLASH 10 x FIRESTAR
MINES	5 x CRAB 5 x LEECH

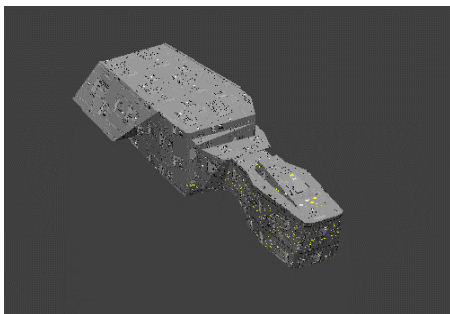
STARCARRIER



SHIELDS	650
ARMOR	750
LASER RANGE	15000
LASER RECHARGE TIME	450
LASER BLAST ENERGY	25
MAX RADAR RANGE	250000
PITCH/ROLL/YAW	5/4/5
LENGTH	800

- WEAPONRY -	
MAIN GUNS	4 x T2 TORPEDO
TURRETS	2 x T4 LASER
MISSILES	10 x RALIX 10 x ANALOG
MINES	10 x CRAB

SENTRY



SHIELDS	500
ARMOR	750
LASER RANGE	15000
LASER RECHARGE TIME	450
LASER BLAST ENERGY	25
MAX RADAR RANGE	250000
PITCH/ROLL/YAW	4/5/4
LENGTH	725

- WEAPONRY -	
MAIN GUNS	2 x T4 LASER
TURRETS	2 x T1 TORPEDO
MISSILES	10 x FIRESTAR 10 x ANALOG
MINES	10 x LEECH

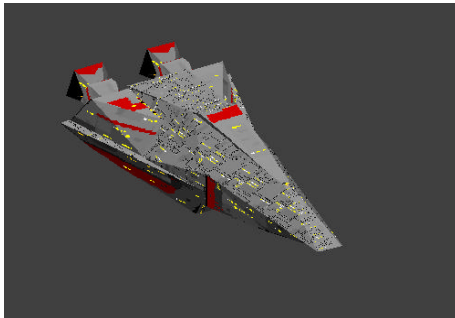
SPACESTAR



SHIELDS 500
ARMOR 850
LASER RANGE 15000
LASER RECHARGE TIME 450
LASER BLAST ENERGY 25
MAX RADAR RANGE 250000
PITCH/ROLL/YAW 4/3/5
LENGTH 765

- WEAPONRY -
MAIN GUNS 4 x T4 LASER
TURRETS 3 x T1 TORPEDO
MISSILES 5 x PERSEUS
5 x STARSEEKER
5 x STARCHILD
MINES 5 x CRAB
5 x LEECH

GARID

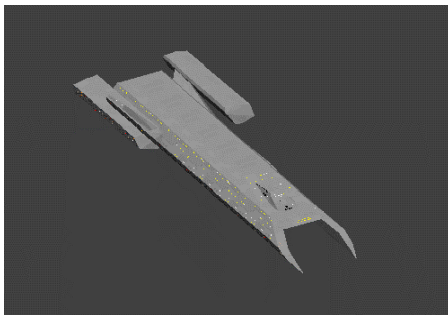


SHIELDS 500
ARMOR 800
LASER RANGE 15000
LASER RECHARGE TIME 450
LASER BLAST ENERGY 25
MAX RADAR RANGE 250000
PITCH/ROLL/YAW 4/4/5
LENGTH 850

- WEAPONRY -
MAIN GUNS 2 x T2 TORPEDO
TURRETS 3 x T4 LASER
MISSILES 5 x PERSEUS
5 x STARSEEKER
5 x STARCHILD
MINES 10 x CRAB

3. HEAVY CRUISERS

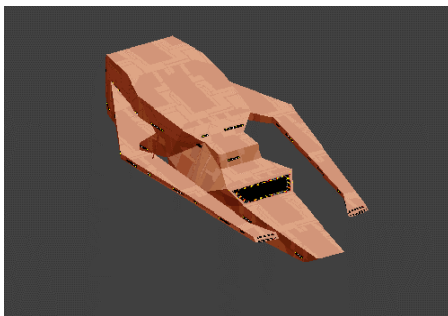
STARCRUISER



SHIELDS 500
ARMOR 500
LASER RANGE 10000
LASER RECHARGE TIME 350
LASER BLAST ENERGY 20
MAX RADAR RANGE 250000
PITCH/ROLL/YAW 4/4/5
LENGTH 890

- WEAPONRY -
MAIN GUNS 2 x T1 TORPEDO
TURRETS 2 x T1 TORPEDO
MISSILES 10 x STARSEEKER
10 x STARCHILD
MINES 5 x CRAB
5 x LEECH

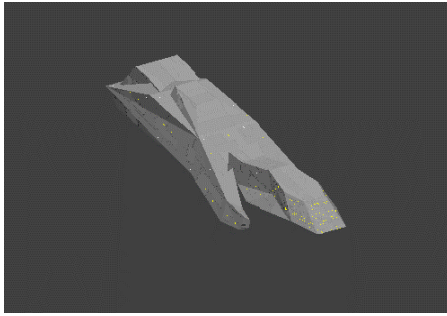
STARWARRIOR



SHIELDS 350
ARMOR 350
LASER RANGE 10000
LASER RECHARGE TIME 350
LASER BLAST ENERGY 20
MAX RADAR RANGE 250000
PITCH/ROLL/YAW 5/5/4
LENGTH 825

- WEAPONRY -
MAIN GUNS 3 x T1 TORPEDO
TURRETS 2 x T1 TORPEDO
MISSILES 5 x FIRESTAR
5 x STARSEEKER
5 x STARCHILD
MINES 5 x CRAB
5 x LEECH

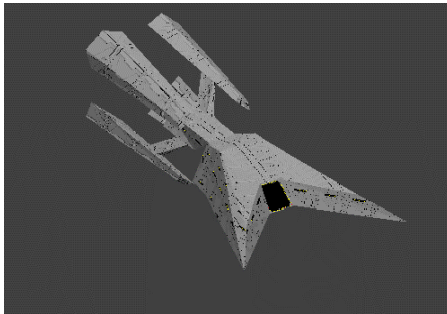
SOLNAR



SHIELDS	350
ARMOR	500
LASER RANGE	10000
LASER RECHARGE TIME	350
LASER BLAST ENERGY	20
MAX RADAR RANGE	250000
PITCH/ROLL/YAW	5/5/5
LENGTH	925

- WEAPONRY -	
MAIN GUNS	2 x T1 TORPEDO
TURRETS	3 x T1 TORPEDO
MISSILES	5 x RALIX
	5 x STARCHILD
	5 x STARFLASH
MINES	10 x CRAB
	10 x LEECH

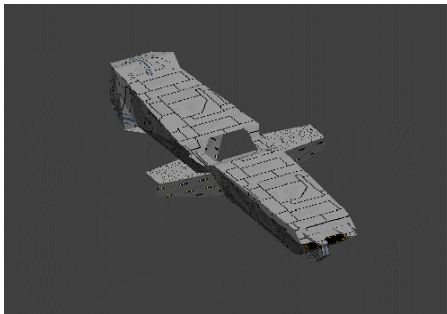
QUESTAR



SHIELDS	500
ARMOR	350
LASER RANGE	10000
LASER RECHARGE TIME	350
LASER BLAST ENERGY	25
MAX RADAR RANGE	250000
PITCH/ROLL/YAW	5/4/5
LENGTH	925

- WEAPONRY -	
MAIN GUNS	2 x T2 TORPEDO
TURRETS	2 x T1 TORPEDO
MISSILES	10 x STAREEKER
	10 x PERSEUS
MINES	20 x LEECH

SUNFLASH

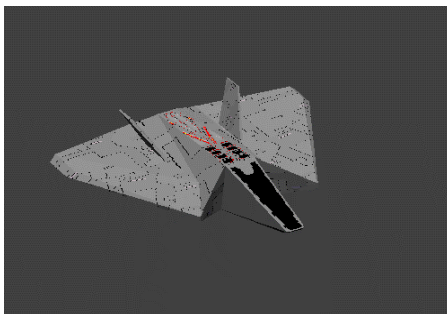


SHIELDS	350
ARMOR	550
LASER RANGE	10000
LASER RECHARGE TIME	350
LASER BLAST ENERGY	20
MAX RADAR RANGE	250000
PITCH/ROLL/YAW	4/4/5
LENGTH	900

- WEAPONRY -	
MAIN GUNS	4 x T1 TORPEDO
TURRETS	3 x T1 TORPEDO
MISSILES	10 x RALIX
	10 x ANALOG
MINES	10 x CRAB
	10 x LEECH

4. SUPER FIGHTERS

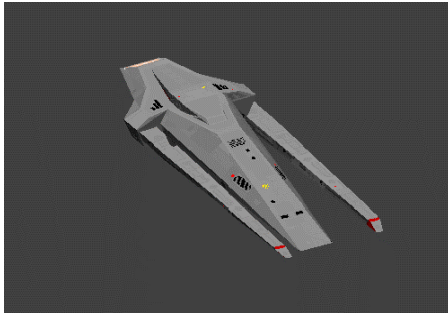
L FIGHTER



SHIELDS	250
ARMOR	250
LASER RANGE	10000
LASER RECHARGE TIME	250
LASER BLAST ENERGY	15
MAX RADAR RANGE	150000
PITCH/ROLL/YAW	4/5/4
LENGTH	95

- WEAPONRY -	
GUNS	2 x T2 LASER
MISSILES	4 x WARRIOR
	4 x HYPERDYNE
	4 x QUESTOR
	4 x RALIX

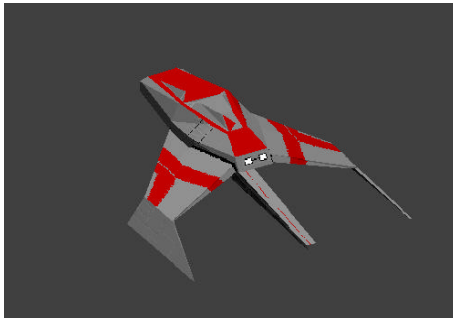
S FIGHTER



SHIELDS 300
ARMOR 300
LASER RANGE 10000
LASER RECHARGE TIME 250
LASER BLAST ENERGY 15
MAX RADAR RANGE 150000
PITCH/ROLL/YAW 4/5/3
LENGTH 100

- WEAPONRY -
GUNS 2 X T2 LASER
MISSILES 4 X MARINER
4 X MAVERICK
4 X VAGRANT
4 X STARFLASH

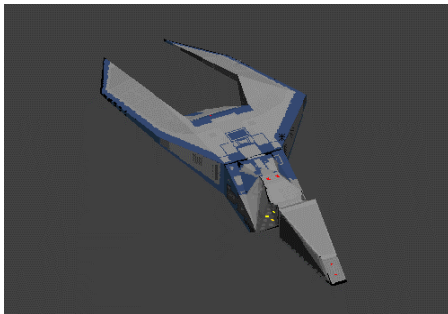
S24 RAVEN



SHIELDS 400
ARMOR 400
LASER RANGE 10000
LASER RECHARGE TIME 250
LASER BLAST ENERGY 15
MAX RADAR RANGE 150000
PITCH/ROLL/YAW 5/5/5
LENGTH 95

- WEAPONRY -
GUNS 3 X T2 LASER
MISSILES 4 X WARRIOR
4 X SPYDER
5 X PERSEUS
5 X STARSEEKER

DEFENDER



SHIELDS 500
ARMOR 500
LASER RANGE 10000
LASER RECHARGE TIME 250
LASER BLAST ENERGY 15
MAX RADAR RANGE 150000
PITCH/ROLL/YAW 3/5/4
LENGTH 105

- WEAPONRY -
GUNS 3 X T2 LASER
MISSILES 4 X SEEKER
4 X GAINER
5 X QUESTOR
5 X STARCHILD

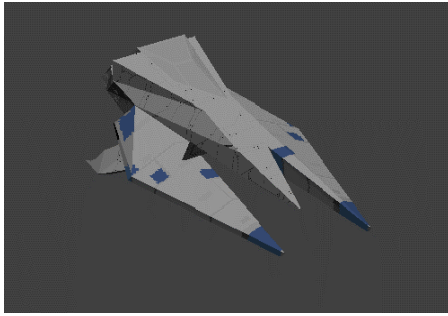
P21 VANDAL



SHIELDS 300
ARMOR 500
LASER RANGE 10000
LASER RECHARGE TIME 250
LASER BLAST ENERGY 15
MAX RADAR RANGE 150000
PITCH/ROLL/YAW 5/5/5
LENGTH 110

- WEAPONRY -
GUNS 3 X T2 LASER
MISSILES 6 X MAGELLAN
4 X HARPOON
5 X PERSEUS
5 X QUESTOR

ZENSTAR

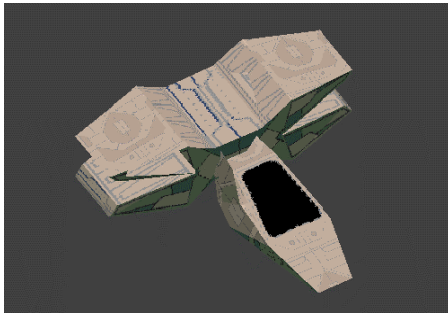


SHIELDS 250
ARMOR 500
LASER RANGE 10000
LASER RECHARGE TIME 250
LASER BLAST ENERGY 15
MAX RADAR RANGE 150000
PITCH/ROLL/YAW 4/5/4
LENGTH 100

- WEAPONRY -
GUNS 3 x T2 LASER
MISSILES 6 x WARRIOR
4 x GAINER
5 x STARFLASH
5 x FIRESTAR

5. HEAVY FIGHTERS

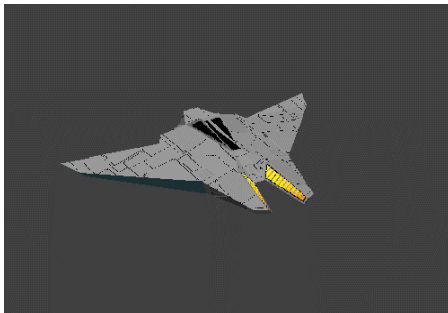
STARDRONE



SHIELDS 250
ARMOR 200
LASER RANGE 8500
LASER RECHARGE TIME 350
LASER BLAST ENERGY 15
MAX RADAR RANGE 125000
PITCH/ROLL/YAW 4/3/2
LENGTH 70

- WEAPONRY -
GUNS 2 x T2 LASER
MISSILES 5 x CLUSTER
4 x LYNX
3 x STARFLASH
3 x STARSEEKER

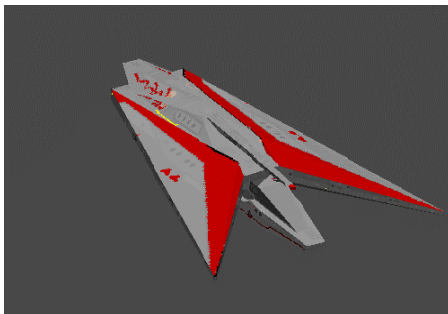
INFILTRATOR



SHIELDS 250
ARMOR 250
LASER RANGE 8500
LASER RECHARGE TIME 350
LASER BLAST ENERGY 15
MAX RADAR RANGE 125000
PITCH/ROLL/YAW 4/3/4
LENGTH 70

- WEAPONRY -
GUNS 2 x T2 LASER
MISSILES 5 x MAGELLAN
4 x GAINER
3 x FIRESTAR
3 x ANALOG

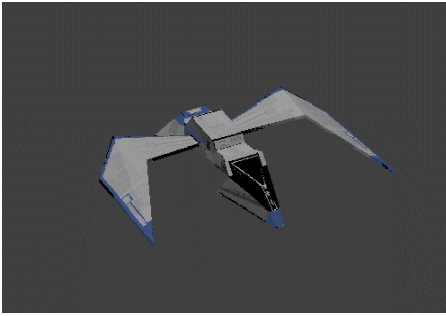
CORSAIR



SHIELDS 250
ARMOR 300
LASER RANGE 8500
LASER RECHARGE TIME 350
LASER BLAST ENERGY 15
MAX RADAR RANGE 125000
PITCH/ROLL/YAW 4/4/5
LENGTH 85

- WEAPONRY -
GUNS 2 x T2 LASER
MISSILES 5 x MARINER
4 x HYPERDYNE
3 x STARFLASH
3 x ANALOG

VIPER

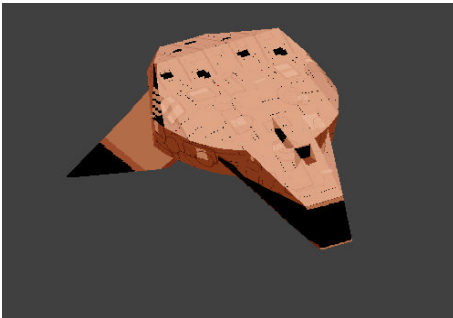


SHIELDS	300
ARMOR	300
LASER RANGE	8500
LASER RECHARGE TIME	350
LASER BLAST ENERGY	20
MAX RADAR RANGE	125000
PITCH/ROLL/YAW	4/5/4
LENGTH	85

- WEAPONRY -

GUNS	2 x T3 LASER
MISSILES	5 x SEEKER
	4 x HARPOON
	3 x FIRESTAR
	3 x RALIX

STARFIGHTER



SHIELDS	250
ARMOR	250
LASER RANGE	8500
LASER RECHARGE TIME	350
LASER BLAST ENERGY	15
MAX RADAR RANGE	125000
PITCH/ROLL/YAW	1/1/2
LENGTH	85

- WEAPONRY -

GUNS	2 x T2 LASER
MISSILES	5 x MARINER
	4 x MAVERICK
	3 x STARFLASH
	3 x STARCHILD

INTERCEPTOR (RENEGADE CLASS)

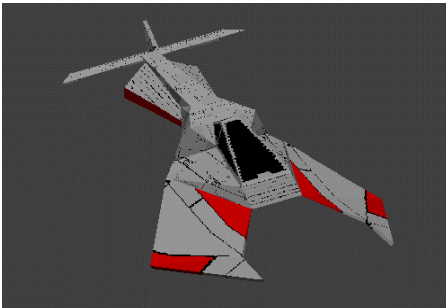


SHIELDS	175
ARMOR	175
LASER RANGE	8500
LASER RECHARGE TIME	350
LASER BLAST ENERGY	15
MAX RADAR RANGE	125000
PITCH/ROLL/YAW	5/5/5
LENGTH	75

- WEAPONRY -

GUNS	2 x T2 LASER
MISSILES	5 x MAGELLAN
	4 x GAINER
	3 x STARFLASH
	3 x STARCHILD

INTERCEPTOR (SOLARIAN CLASS)

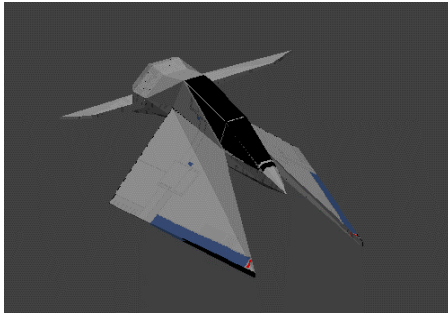


SHIELDS	250
ARMOR	250
LASER RANGE	10000
LASER RECHARGE TIME	150
LASER BLAST ENERGY	10
MAX RADAR RANGE	125000
PITCH/ROLL/YAW	5/5/5
LENGTH	75

- WEAPONRY -

GUNS	2 x T0 LASER
MISSILES	5 x MARINER
	4 x HARPOON
	3 x VAGRANT
	3 x RALIX

N FIGHTER



SHIELDS 250
ARMOR 300
LASER RANGE 8500
LASER RECHARGE TIME 350
LASER BLAST ENERGY 15
MAX RADAR RANGE 125000
PITCH/ROLL/YAW 4/3/3
LENGTH 85

- WEAPONRY -
GUNS 2 x T2 LASER
MISSILES 5 x SEEKER
4 x SPYDER
3 x STARFLASH
3 x STARCHILD

TEMPLON

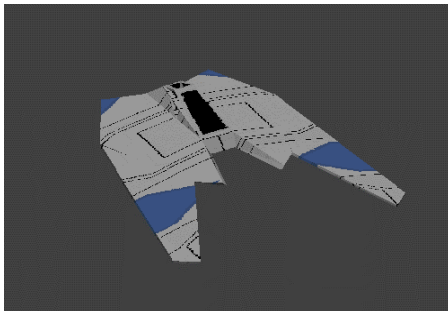


SHIELDS 250
ARMOR 300
LASER RANGE 8500
LASER RECHARGE TIME 350
LASER BLAST ENERGY 15
MAX RADAR RANGE 125000
PITCH/ROLL/YAW 4/3/2
LENGTH 80

- WEAPONRY -
GUNS 4 x T2 LASER
MISSILES 5 x MARINER
4 x HARPOON
3 x VAGRANT
3 x RALIX

6. MEDIUM FIGHTERS

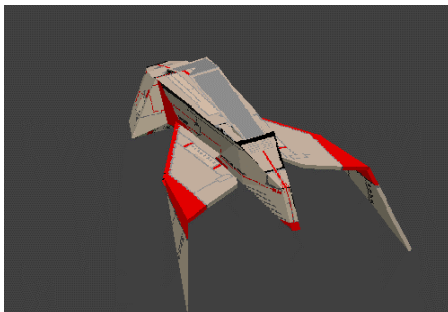
MANTIS



SHIELDS 225
ARMOR 225
LASER RANGE 7500
LASER RECHARGE TIME 400
LASER BLAST ENERGY 10
MAX RADAR RANGE 125000
PITCH/ROLL/YAW 3/5/3
LENGTH 65

- WEAPONRY -
GUNS 2 x T1 LASER
MISSILES 4 x CLUSTER
4 x SPYDER
2 x STARFLASH
2 x FIRESTAR

STARLANCE



SHIELDS 225
ARMOR 225
LASER RANGE 7500
LASER RECHARGE TIME 400
LASER BLAST ENERGY 10
MAX RADAR RANGE 125000
PITCH/ROLL/YAW 2/2/2
LENGTH 65

- WEAPONRY -
GUNS 2 x T1 LASER
MISSILES 4 x SEEKER
4 x GAINER
2 x STARFLASH
2 x STARSEEKER

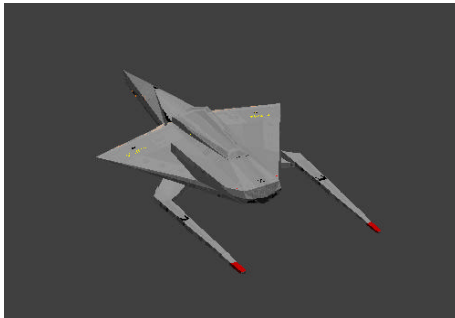
X22 AURORA



SHIELDS 275
ARMOR 225
LASER RANGE 7500
LASER RECHARGE TIME 400
LASER BLAST ENERGY 10
MAX RADAR RANGE 125000
PITCH/ROLL/YAW 4/4/3
LENGTH 70

- WEAPONRY -
GUNS 2 x T1 LASER
MISSILES 4 x MARINER
2 x PERSEUS
2 x RALIX

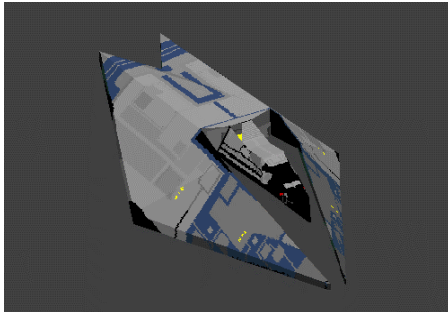
INTERDICTOR



SHIELDS 225
ARMOR 225
LASER RANGE 7500
LASER RECHARGE TIME 400
LASER BLAST ENERGY 10
MAX RADAR RANGE 125000
PITCH/ROLL/YAW 2/4/2
LENGTH 70

- WEAPONRY -
GUNS 2 x T1 LASER
MISSILES 4 x PILGRIM
4 x GAINER
2 x VAGRANT
2 x QUESTOR

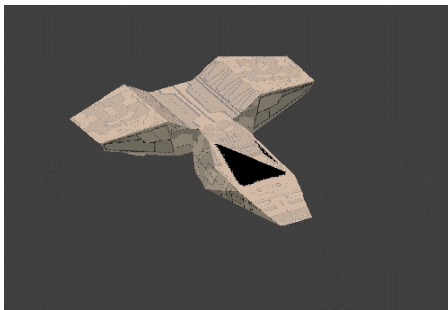
SENTINEL



SHIELDS 200
ARMOR 200
LASER RANGE 5500
LASER RECHARGE TIME 500
LASER BLAST ENERGY 15
MAX RADAR RANGE 100000
PITCH/ROLL/YAW 5/4/3
LENGTH 70

- WEAPONRY -
GUNS 2 x T2 LASER
MISSILES 4 x MAGELLAN
4 x GAINER
4 x QUESTOR

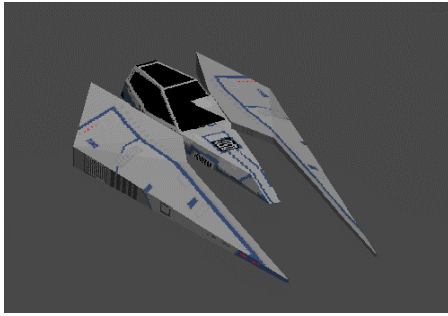
LIGHTSTAR



SHIELDS 200
ARMOR 225
LASER RANGE 5500
LASER RECHARGE TIME 500
LASER BLAST ENERGY 15
MAX RADAR RANGE 75000
PITCH/ROLL/YAW 2/4/2
LENGTH 70

- WEAPONRY -
GUNS 2 x T2 LASER
MISSILES 4 x CLUSTER
4 x SPYDER
4 x RALIX

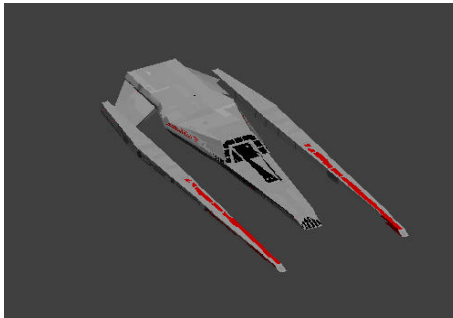
ZODIAC



SHIELDS	225
ARMOR	200
LASER RANGE	6500
LASER RECHARGE TIME	500
LASER BLAST ENERGY	15
MAX RADAR RANGE	75000
PITCH/ROLL/YAW	4/5/4
LENGTH	75

- WEAPONRY -
GUNS 2 x T2 LASER
MISSILES 4 x SEEKER
4 x MAVERICK
4 x PERSEUS

STARMONK



SHIELDS	225
ARMOR	225
LASER RANGE	7500
LASER RECHARGE TIME	500
LASER BLAST ENERGY	15
MAX RADAR RANGE	100000
PITCH/ROLL/YAW	5/4/3
LENGTH	75

- WEAPONRY -
GUNS 2 x T2 LASER
MISSILES 4 x PILGRIM
4 x HYPERDYNE
4 x STARFLASH

ALINIX



SHIELDS	250
ARMOR	250
LASER RANGE	6500
LASER RECHARGE TIME	500
LASER BLAST ENERGY	15
MAX RADAR RANGE	100000
PITCH/ROLL/YAW	5/4/3
LENGTH	70

- WEAPONRY -
GUNS 2 x T2 LASER
MISSILES 4 x WARRIOR
4 x MAVERICK
4 x VAGRANT

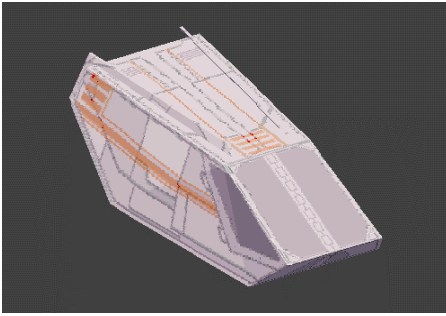
7. SHUTTLES

SHUTTLE T1



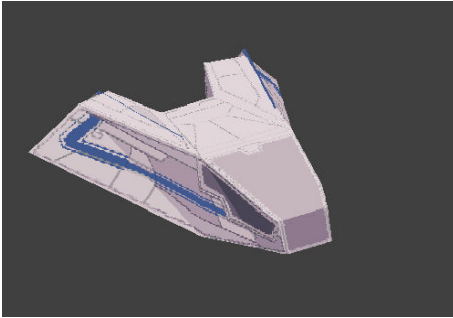
SHIELDS	25
ARMOR	125
PITCH/ROLL/YAW	2/2/2
MAX RADAR RANGE	50000
LENGTH	115

SHUTTLE T2



SHIELDS	25
ARMOR	125
PITCH/ROLL/YAW	2/2/2
MAX RADAR RANGE	50000
LENGTH	115

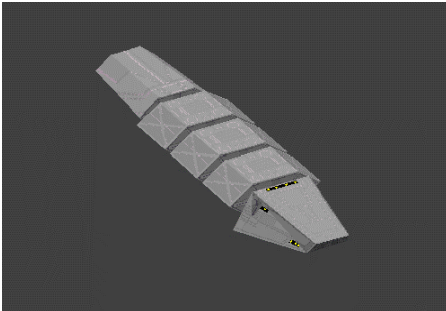
SHUTTLE T3



SHIELDS	25
ARMOR	125
PITCH/ROLL/YAW	2/2/2
MAX RADAR RANGE	50000
LENGTH	100

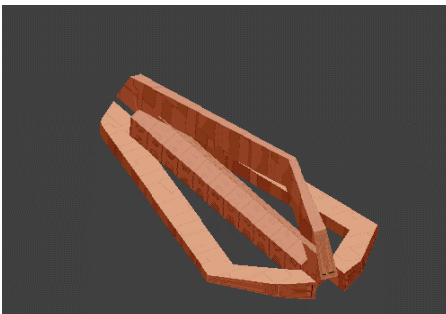
8. UNARMED TRANSPORTS

LRT-10



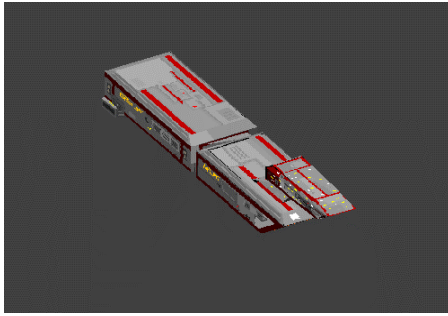
SHIELDS	150
ARMOR	1000
PITCH/ROLL/YAW	2/2/2
MAX RADAR RANGE	100000
LENGTH	4500

LRT-15



SHIELDS	200
ARMOR	1650
PITCH/ROLL/YAW	2/3/4
MAX RADAR RANGE	100000
LENGTH	4500

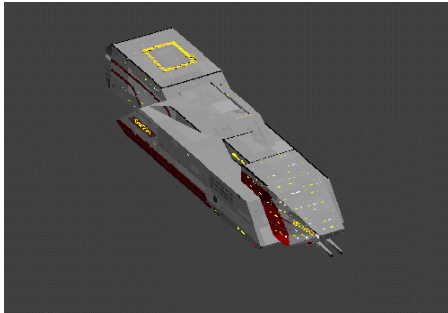
MRT-15



SHIELDS	250
ARMOR	1650
PITCH/ROLL/YAW	2/2/2
MAX RADAR RANGE	100000
LENGTH	4500

9. ARMED TRANSPORTS

CANLON



SHIELDS	500
ARMOR	1000
LASER RANGE	1000
LASER RECHARGE TIME	125
LASER BLAST ENERGY	15
MAX RADAR RANGE	150000
PITCH/ROLL/YAW	2/2/2
LENGTH	4200

- WEAPONRY -
MAIN GUNS 2 x T2 LASER
TURRETS 2 x T2 LASER
MISSILES 10 x ANALOG

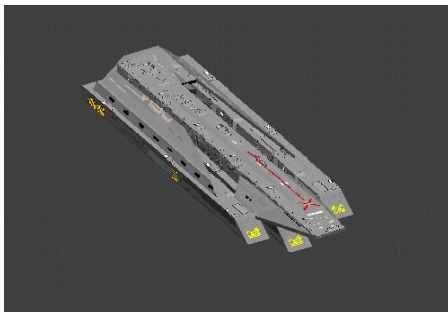
GENERIS



SHIELDS	550
ARMOR	1000
LASER RANGE	1000
LASER RECHARGE TIME	125
LASER BLAST ENERGY	15
MAX RADAR RANGE	150000
PITCH/ROLL/YAW	2/2/2
LENGTH	4000

- WEAPONRY -
MAIN GUNS 2 x T2 LASER
TURRETS 4 x T2 LASER
MISSILES 10 x STAREEKER
10 x STARFLASH

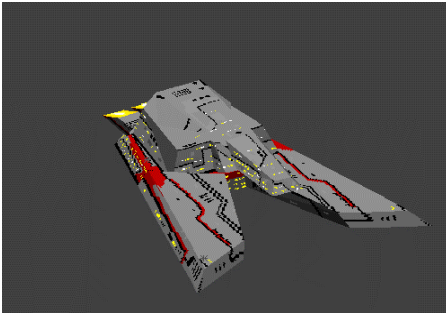
JENSTAR



SHIELDS	650
ARMOR	1250
LASER RANGE	1000
LASER RECHARGE TIME	125
LASER BLAST ENERGY	10
MAX RADAR RANGE	200000
PITCH/ROLL/YAW	2/2/2
LENGTH	4500

- WEAPONRY -
MAIN GUNS 2 x T2 LASER
TURRETS 5 x T2 LASER
MISSILES 5 x ANALOG
5 x STAREEKER

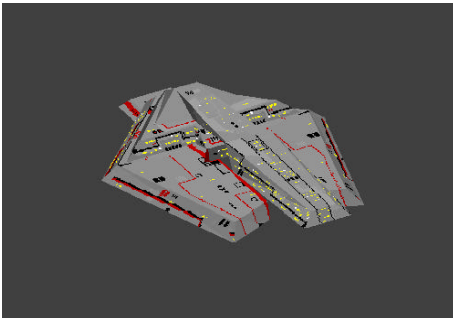
TARIN MK I



SHIELDS	650
ARMOR	1250
LASER RANGE	1000
LASER RECHARGE TIME	125
LASER BLAST ENERGY	15
MAX RADAR RANGE	150000
PITCH/ROLL/YAW	2/2/2
LENGTH	3500

- WEAPONRY -
MAIN GUNS 2 x T2 LASER
TURRETS 2 x T3 LASER
MISSILES 10 x ANALOG

TARIN MK II



SHIELDS	650
ARMOR	850
LASER RANGE	1000
LASER RECHARGE TIME	125
LASER BLAST ENERGY	15
MAX RADAR RANGE	250000
PITCH/ROLL/YAW	2/2/2
LENGTH	3500

- WEAPONRY -
MAIN GUNS 2 x T2 LASER
TURRETS 3 x T2 LASER
MISSILES 5 x ANALOG
5 x STARFLASH